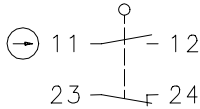


Series GC

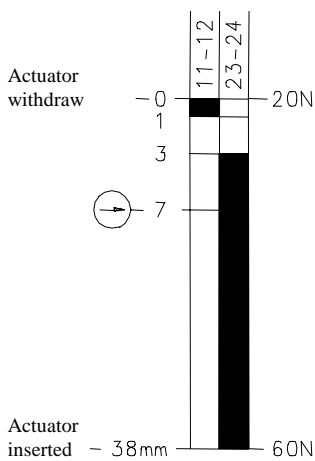
Description **GC-U1Z VT 90GR**


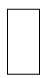
Article number **6121100555**

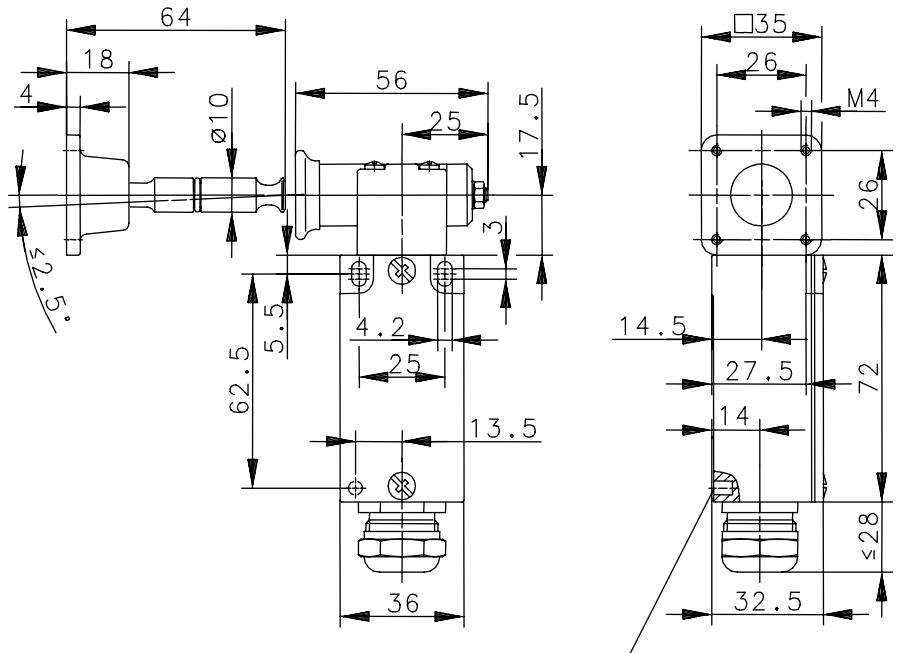
Operating symbol



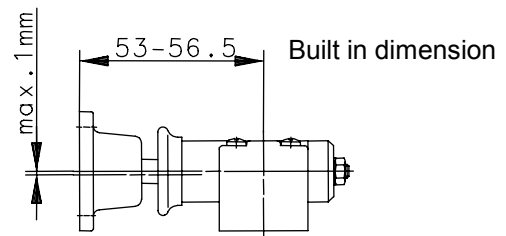
Operating diagram




  Tolerances
 Operating point: $\pm 0,3\text{mm}$;
 Operating torque: $\pm 10\%$



Blind hole for fitting pin
 $\varnothing 4$; 5.5 deep



Electrical data

Rated insulation voltage	U_i	400 VAC
Conv. thermal current	I_{the}	10A
Utilization category		AC-15, U_e/I_e 240V/3A
Positive opening NC contact		acc. to IEC/EN 60947-5-1, Annex K
Short-circuit protective device		Fuse 10A gL/gG
Protection class		I

This document will not become the contractual basis; the details included herein do not constitute any descriptions of expected conditions, so that warranties/claims for defects on account of possible variations of the actual qualities from the qualities described herein are explicitly excluded. All rights reserved. Specifications subject to change without notice!

Date of issue: 07.03.2006 / Page 1 of 2
 Document: 6121100555_en / Last update: 1 / 2217-06

Mechanical data	
Enclosure	Die-cast aluminium
Cover	Sheet aluminium
Actuator	Separate actuator
Ambient air temperature	-30°C ... +80°C
Contact type	1 NC, 1 NO (Zb)
Mechanical life	1 x 10 ⁶ operating cycles
Switching frequency	≤ 10 / min.
Assembly	2 x M4
Connection	4 screw terminals (M3,5)
Conductor cross-sections	Solid: 0.5 ... 1.5mm ² Litz wire with ferrules: 0.5 ... 1.5mm ²
Cable entrance	1 x cable gland (M20x1,5; clamp-range 6 – 12mm),
Weight	≈ 0,32 kg
Installation position	Operator definable
Protection type	IP65 acc. to IEC/EN 60529

Standards	VDE 0660 T100, DIN EN 60947-1, IEC 60947-1 VDE 0660 T200, DIN EN 60947-5-1, IEC 60947-5-1
------------------	--

EU Conformity	CE
----------------------	-----------

Approvals	BG UL A300 (same polarity)
------------------	-------------------------------

Notes
The specified protection classification (IP code) applies only when the cover is closed and the appropriate cable is used, in accordance with the clamping range of the above mentioned cable gland.

Mounting:
When used as safety switch pay attention to EN 60204 (use NC-contacts).
Also secure by a set pin (hole within the bottom of the case).
Actuator to be fixed with 4 screws M4 at the movable guard.
Please pay attention to the specified maximum of misalignment of the actuator.

Position of the actuator head determined at works, must not be modified.
Screws obviously secured.