

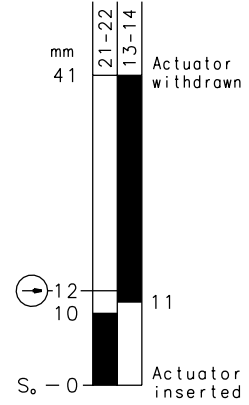
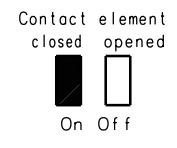
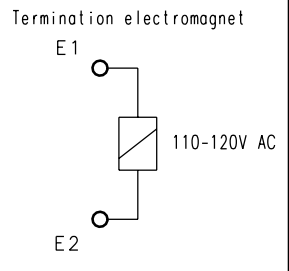
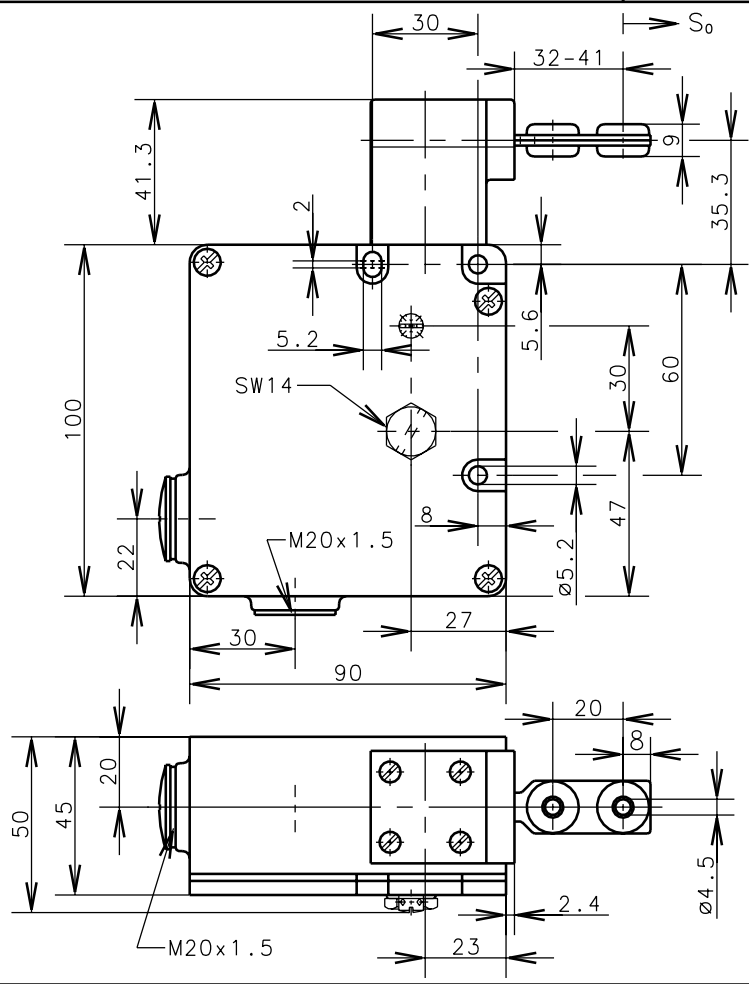


Bernstein

Bernstein AG
Postfach 1164
D-32437 Porta Westfalica

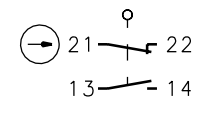
Technical data sheet: Safety switch
Metal encapsulated, 2 x M20x1.5, Locked by spring force

Type: SLM-FVTW120AC-55-AR Art.-No.: 601.7119.032 Date: 26.04.01

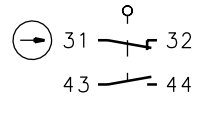


F_{min.} = 30N

Position monitoring of guard locking



Position monitoring of electromagnet



Contact travel Tensile force Contact operating force tolerance ±15%

Schutzvermerk nach DIN 34 beachten
Copyright reserved

Mechanical features:	Electrical features:	Approvals:
Enclosure: Al-GD	Contacts elements	BG
Cover: Al-sheet	Rated insulation voltage U _i : 250V	UL B300, R300
Actuating head: Al-GD	Utilisation categorie: AC 12 250 V/10 A	CSA B300, R300
Separated actuator: St/PA	Utilisation categorie: AC 15 230 V/4 A	Standards:
Ambient air temperature: -30°C up to +60°C	Short circuit protection: DIAZED-safety implants Operating categorie gL/gG 10A TDz, 16A Dz	VDE 0660 T100, EN 60947-1 VDE 0660 T200, EN 60947-5-1
Contact type: 2NC; 2NO	Electromagnet:	IEC 60947-5-1
Switching principle: 4 slow make and break contact elements	Duty cycle: 100 % ED	GS-ET 19
Mechanical life: 1x10 ⁶ switch operations	Temperature class: B	Remarks:
Actuating radius: R _{min.} =400mm	Power consumption: P ₂₀ = 5.2W	The moving protection class (IP-Code) is valid only at closed cover and when using an at least equivalent cable gland.
Velocity for actuating: V _{max.} =1.5m/s	Operating voltage: 110-120V AC	
Mounting according DIN EN 50041 3 screws M5		
Termination cross section: 1mm ² flex.	Safety instructions	
Terminals: 10 screws M3.5		
2 non-fused earthed conductor M4		
Cable entry size: 2 x M20x1.5		
Weight: approx. 0,81 kg		
Protection class (IP-Code): IP67 according to EN 60529; DIN VDE 0470 T1		
Build in location: selectable		
Locking principle: spring force latching		
Unlocking: a) magnetic force b) auxiliary release (look at remarks)		
Locking force: 1000 N retaining force in locked position		