

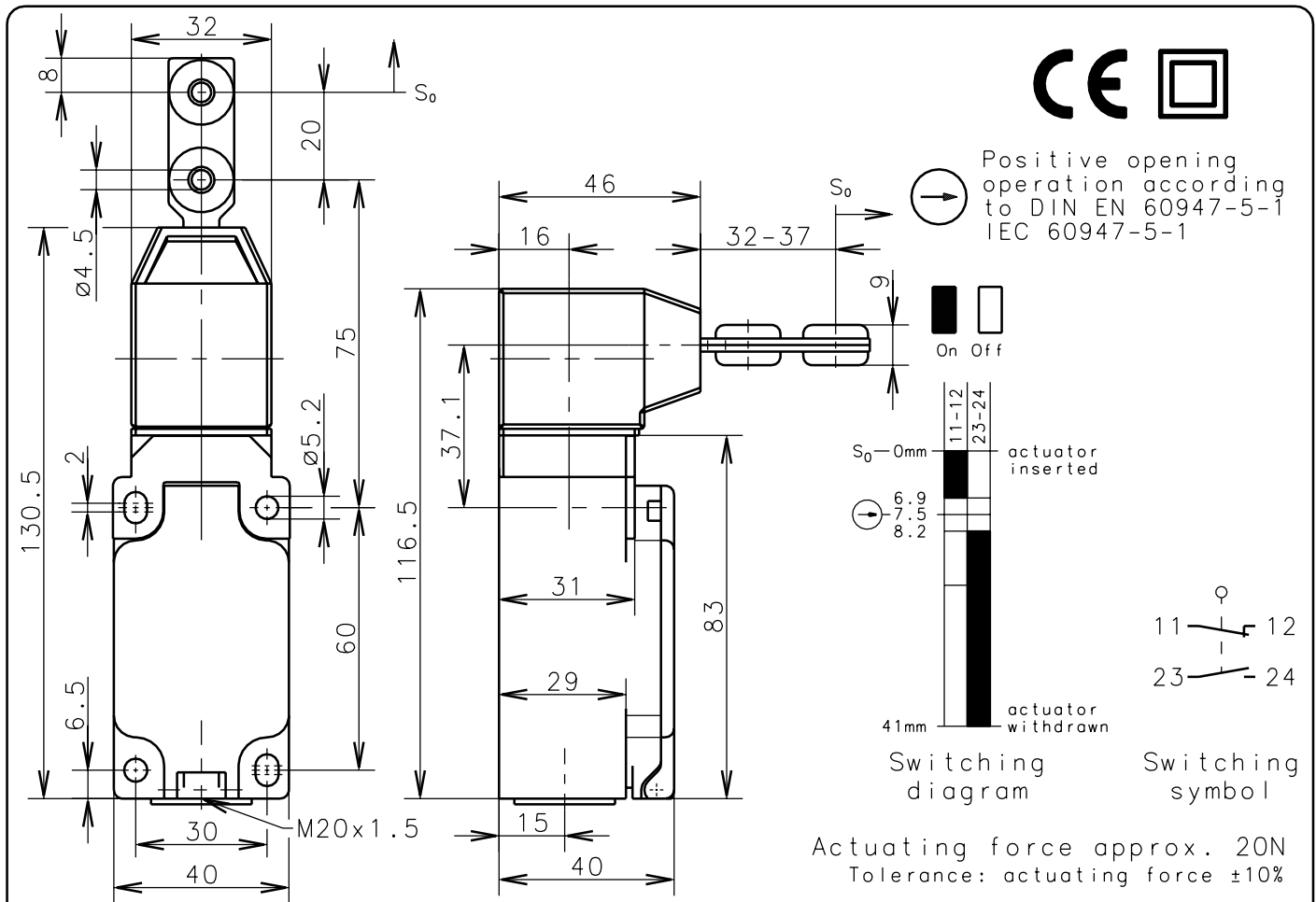
**Bernstein**Bernstein AG
Postfach 1164
D-32437 Porto Westfalica**Technical data sheet**

ENK-U1Z VTU

601.6619.132

Schutzvermerk nach DIN 34 beachten
Copyright reserved

23.03.2001

**Mechanical features**

Enclosure: Thermoplast, glass fibre reinforced
 Cover: Thermoplast, glass fibre reinforced
 Actuator: Separate actuator (St/PA), actuating head (PA6 GV/Zn-GD)

Ambient air temperature: -30°C up to +80°C
 Contact type: 1 NC-contact, 1 NO-contact (Zb)

Mechanical life: 1×10^6 switch operations
 Switch frequency: max. 30/min
 Mounting: 4 x M5
 Connection type: 4 screw connections (M3.5)
 Conductor cross-section: single core $1 \times 0.5-1.5 \text{ mm}^2$ / litz wire with connector sleeve $0.5-1.5 \text{ mm}^2$
 Cable entry size: 1 x M20x1.5
 Weight: approx. 0,23 kg

Electrical features

Max. Voltage: 250 V AC
 Max. enduring current: I_{the} 10A
 Max. inrush current: according to IEC 60947-5-1; AC 15, A300
 Utilization categorie: AC 15, A300 240V/3A
 Standards: according to EN 60947-1; EN 60947-5-1
 Protection class (IP-Code): IP65 according to EN 60529; DIN VDE 0470 T1
 Short-circuit protection: Fuse 10A gL/gG, IEC/EN 60947-5-1, appendix K

Remarks

Minimum actuating radius $R_{min} = 400 \text{ mm}$; velocity for actuating $V_{max} = 0.5 \text{ m/s}$.
 Do not use this safety switch as a mechanical end stop.
 Eight different actuating directions achievable by rotating the actuating head in steps 45°.
 Changing between horizontal and vertical actuating direction by setting the actuating head in the requested direction.
 The planned protection class (IP-Code) is valid only at closed cover and when using an at least equivalent cable gland.