



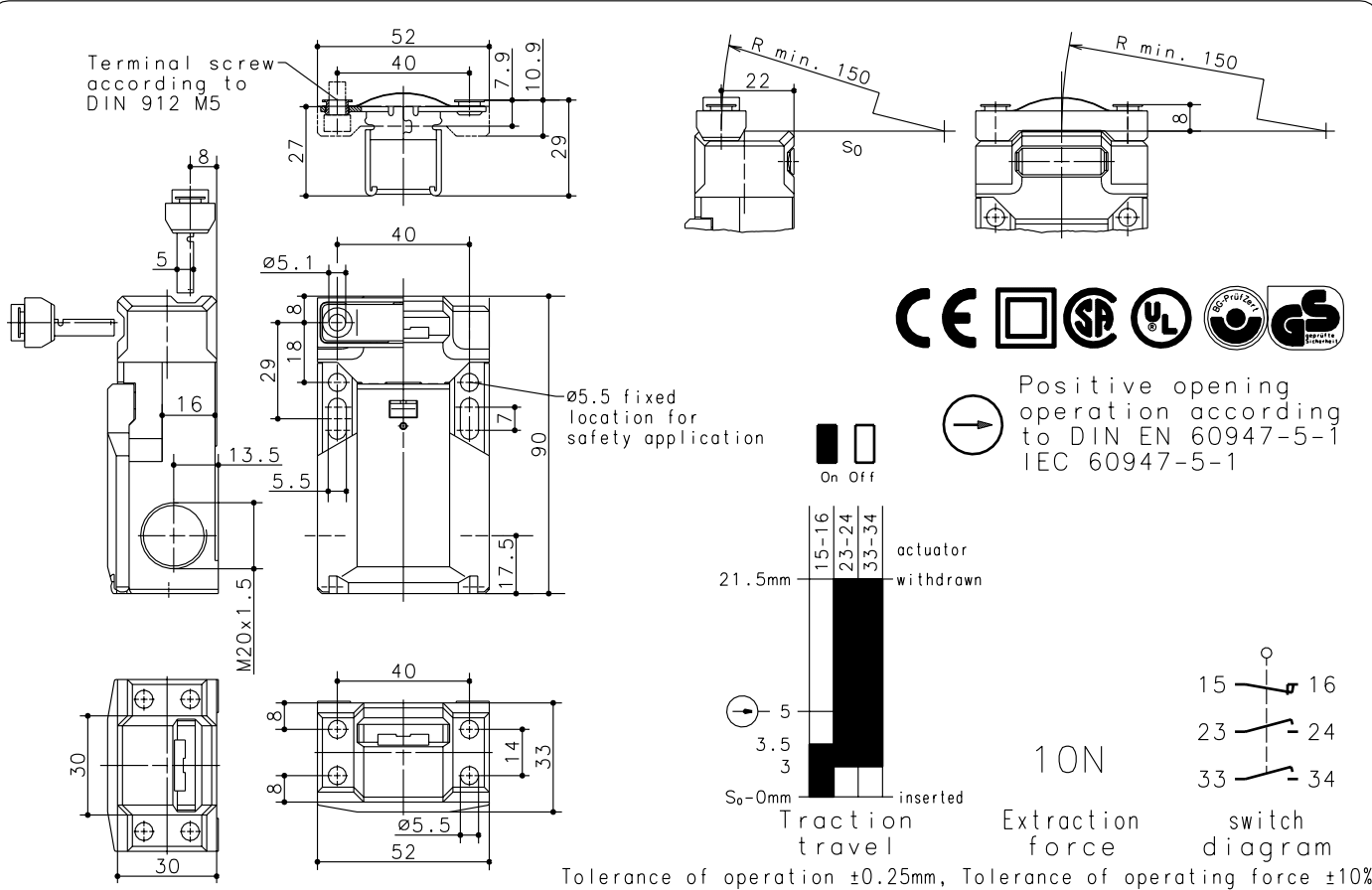
Bernstein

Bernstein AG
Postfach 1164
D-32437 Porta Westfalica

Technical data sheet

SK-UV16Z M

601.6169.027



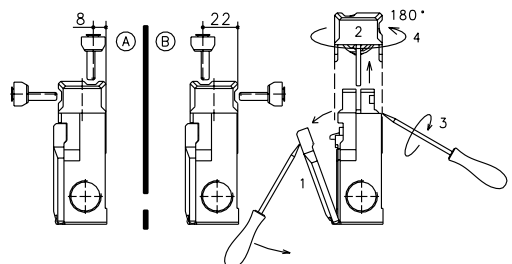
Positive opening operation according to DIN EN 60947-5-1 IEC 60947-5-1

Schutzvermerk nach DIN 34 beachten
Copyright reserved

12.12.2003

Mechanical features	Electrical features
<p>Enclosure: Thermoplast, glass fibre reinforced (UL94-V0) Cover: Thermoplast, glass fibre reinforced (UL94-V0) Actuator: separate actuator (St-stainless steel) Ambient air temperature: -30°C up to +80°C Contact type: 1 NC-contact, 2 NO-contact (Zb) Mechanical life: 1x10⁶ switch operations Switch frequency: 30/min Mounting: enclosure 2xM5, actuator 2xM5 Connection type: 6 screw connections M3 Conductor cross-section: single core 0.5-1.5mm² / litz wire with connector sleeve 0.5-1.5mm² Cable entry size: 2 x M20x1.5 Weight: approx. 0,15 kg Mounting position: selectable Protection class (IP-Code): IP65 according to EN 60529, DIN VDE 0470 T1 The rated protection class (IP-Code) is valid only at closed cover and when using an at least equivalent cable gland.</p>	<p>Rated insulation voltage: U_i = 400V AC B300/ 150V DC R150 Conventional thermal current: I_{th} = 6A AC/ 1A DC Utilization categorie: AC-15 / DC-13 Short circuit protection: Fuse 6A gL/gG, IEC/EN 60947-5-1, appendix K CSA: 6A 300V AC, B300 (same pol.)</p>
	<p>Approvals CSA UL BG</p>
	<p>Standards VDE 0660 T100, EN 60947-1 VDE 0660 T200, EN 60947-5-1 IEC 947-5-1 GS-ET 15</p>

Approach possibilities



Specials / Remarks

- Turning the cap (pos A/B) allow 4 different directions of drive
- Cover (1) has to be opened before turning the cap (2).
- Insert the screwdriver into the gap between housing and cap and turn until the cap snaps off.
- Remove the cap, turn it 180° (4), latch it into the housing and close the cover.
- Radial actuation may reduce the mechanical life.
- The min. radius refers to a pivot at the top of the cap.
- Unused actuator entry slot must be covered by the plug.
- Do not use the switch as end stop.